

*the spirit makes the master...*

# PROSPECTUS 2024

## **BACHELOR PROGRAMS**

**Semester Programs**

**BBM & BCA**

**Annual Programs**

**BSW & BBS**

## **MASTER PROGRAMS**

**Semester Programs**

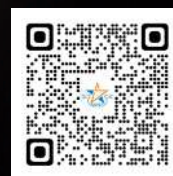
**MBS & MA (English)**



**Southwestern  
State College**

**Basundhara, Kathmandu**

*Affiliated to Tribhuvan University*



**Q** qualityaustria  
**SYSTEM CERTIFIED**  
ISO 9001:2015 No.27180/0  
(QMS Certified College)



# MESSAGE FROM THE CHAIRPERSON

## **Er. Basudev Bista**

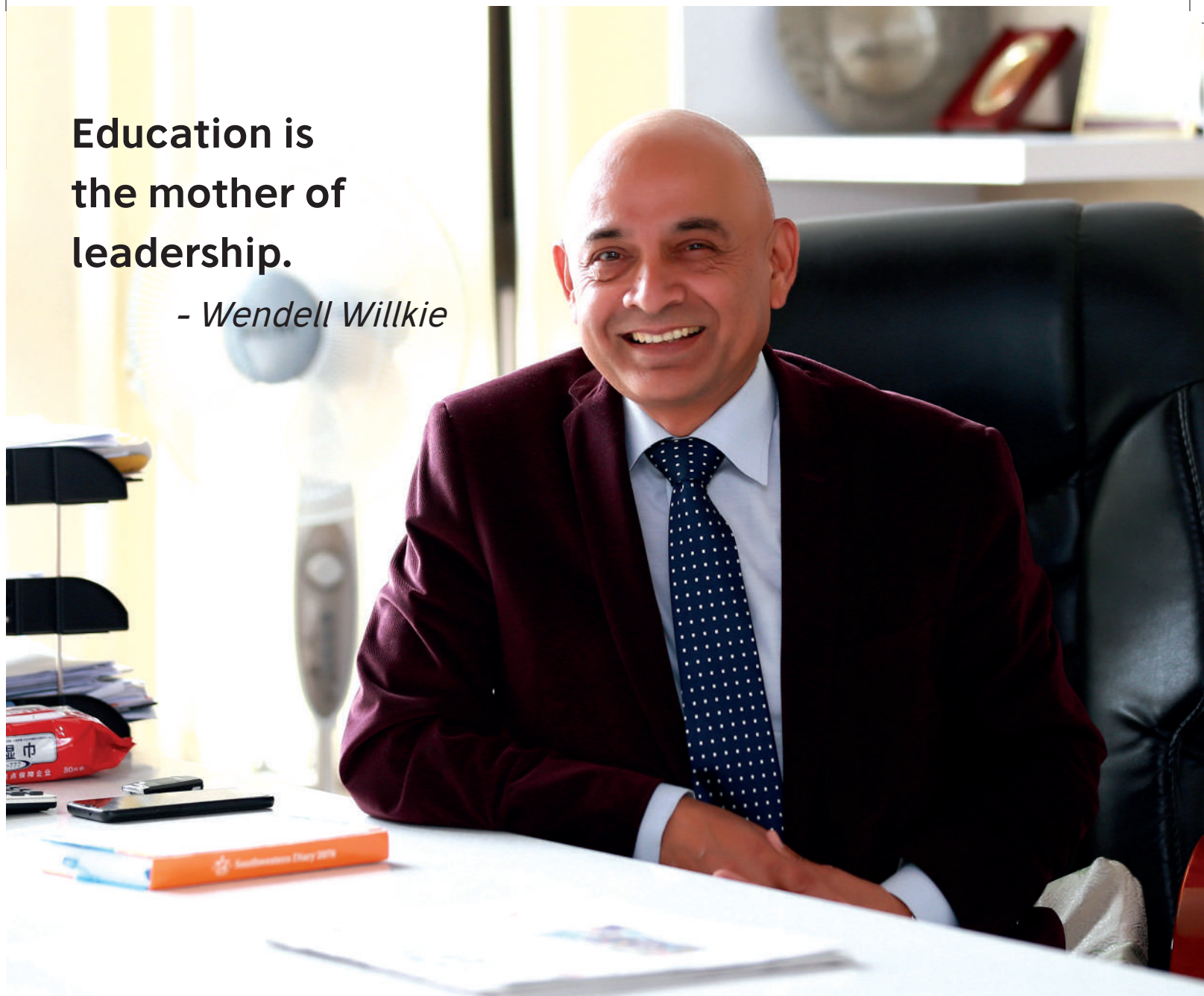
Chairperson

I am thrilled to welcome you to SWSC, where your journey to excellence begins. We are committed to nurturing brilliance, fostering innovation, and providing a world-class education at SWSC. Our distinguished faculty, cutting-edge research opportunities, and dedication to fostering critical thinking prepare our students to lead and excel in their chosen fields. As you embark on your academic journey, remember that every great success starts with a single step. At SWSC, we turn dreams into realities and aspirations into achievements. Let us support you in transforming your potential into remarkable success.



**Education is  
the mother of  
leadership.**

*- Wendell Willkie*



## MESSAGE FROM THE CAMPUS CHIEF

Dear Prospective Parents, Guardians and Students,

Very warm greetings from SWSC, where national and international academic luminaries drive our mission of excellence. We cultivate creative and critical thinking, equipping students with the skills to navigate life's challenges and succeed in their career. Our unwavering commitment to quality education is evident in our blend of theory, research, and practical application, supported by state-of-the-art resources. With a focus on holistic development through group discussions, presentations, and life skills, our dedicated faculties guide each student toward their goals. Our alumni thrive in prestigious roles and universities worldwide, embodying the values of lifelong learning and ethical leadership. Join SWSC and embark on a transformative journey that shapes your future with confidence and success.

**Dr. Rajendra KC**  
Campus Chief



# ABOUT THE COLLEGE

Southwestern State College (SWSC) is an ISO 9001:2015 QMS certified college led by visionary educationists, academicians, researchers, planners, and professionals with extensive national and international experience. The college is located at a prime location in close proximity to Ring Road in Basundhara, Kathmandu with state-of-the-art modern infrastructure. The proficient management team ensures high-quality education at graduate, and postgraduate levels in Management and Humanities.

Committed to qualitative, practical, and value-based education, SWSC fosters invaluable learning experiences, nurturing creative, socially responsive, and result-oriented professionals. The college collaborates with national and international partners to enhance

education quality. The college adapts its teaching methods and offers demand-driven training for staff. It provides a supportive, intellectually stimulating environment with workshops, seminars, and lectures. SWSC's well-equipped library, well-equipped labs, and robust security framework create an ideal learning platform, blending academic excellence with an innovative, entrepreneurial approach.

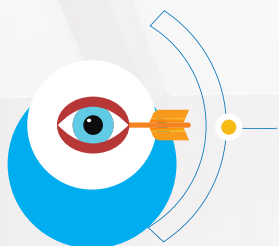
Since quality is the top priority of the college, it has participated in the process of QAA from University Grants Commission (UGC), Nepal. SWSC blends academic excellence with innovative and entrepreneurial approach, engaging and challenging both students and staff in their quest for knowledge and personal growth.





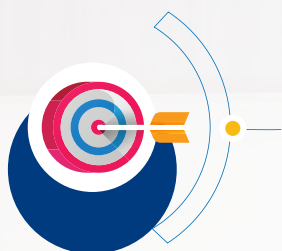
# OUR PHILOSOPHY

## Vision



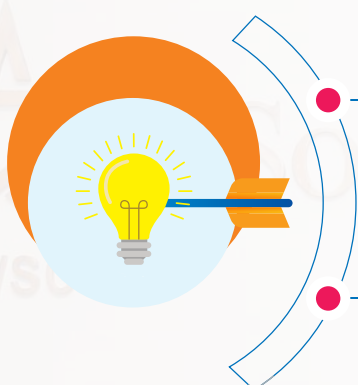
To become a center of excellence in global academic community.

## Mission



To produce positive, visionary, practical, analytical, goal oriented, service oriented, capable, responsible and social professionals who will take the responsibilities of social, economic and environmental development of the nation and the world and encourage others to do so.

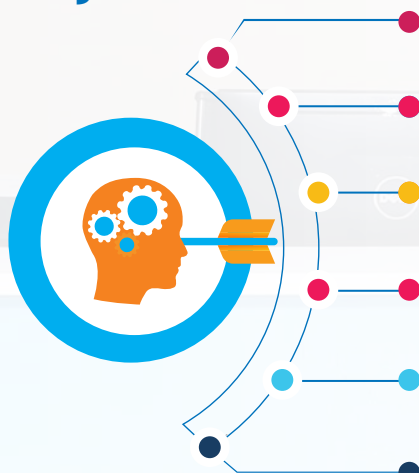
## Goals



To provide the best undergraduate, graduate and post-graduate education to develop social, national and global perspective by excellent teaching and unique curricular and co-curricular activities.

To produce globally employable, responsible leading personalities.

## Objectives



Recruit and retain of the best faculties and staff who can contribute for the achievement of our vision, mission and goal.

Involve and engage the teachers, students and staff in research, creative activities and co-curricular activities.

Offer support services which guarantee an excellent academic experience for the students.

Provide transformational academic experiences through community service, international outreach and innovative teaching pedagogy.

Develop a multi-level, continuous improvement process for the assistance in research, scholarship and creative activities.

Generate an environment of shared understanding and address prospects for and hurdles to efficiency, scholarship and creativity through a regular dialogue among management, teachers, staff and students.



# WHY CHOOSE SWSC?



SWSC is not just a college, it is the best platform for the success of every student. SWSC is a center of excellence offering students a unique and enriching academic experience. Choosing SWSC is an investment for the future filled with excellence. The college offers a world-class education with a commitment to holistic development of the students providing them a good platform for embarking on a transformational journey of learning, discovery, and personal achievement. Here is what sets SWSC apart:

- **Internationally Recognized Quality:** SWSC's ISO 9001:2015 Quality Management System (QMS) certification signifies its commitment to delivering high-caliber education that adheres to rigorous global standards.
- **Global Learning Opportunities:** Students have the opportunity to expand their horizons through SWSC's collaborative partnerships with prestigious universities in America, Australia, Europe, and Asia. These partnerships facilitate faculty and student exchange programs, enriching the academic journey with international perspectives.
- **Holistic Development Approach:** SWSC recognizes the importance of well-rounded individuals. The college complements its rigorous curriculum with civic education classes that nurture valuable life skills such as positive thinking, effective time management skills, and strong communication skills.
- **Comprehensive Learning Resources:** A vast collection of current and relevant resources with hi-tech labs awaits students in the expansive and well-maintained library, fostering a dynamic learning environment.



- **Tech-Integrated Classrooms:** Well-furnished IT-based classrooms leverage cutting-edge technology, including high quality projectors, to create an engaging and interactive learning experience.
- **Strong Communication Skills:** Regular subject-specific presentations enhance students' communication and presentation abilities, fostering confidence and the ability to express themselves clearly and persuasively in any profession.
- **Exposure to Scholarly Discourse:** The annual publication, *Southwestern Research Journal*, offers a platform for students to publish their research. This allows students to showcase their intellectual curiosity and contribute meaningfully to their chosen field.
- **Promotion of Creativity:** *The Southwestern Newsletter* and *Southwestern Education Hub* provide opportunities for students to express their literary talents and creative writing. Beyond academics, these outlets encourage creative expression and exploration of new communication forms.
- **Networking for Professional Advancement:** SWSC cultivates the development of both individual and institutional networking skills. This prepares students to excel in their chosen field by building strong professional connections.
- **Unwavering Safety and Security:** A safe and secure learning environment is our priority. SWSC's earthquake-resistant building, comprehensive security measures, and CCTV surveillance provide peace of mind.
- **Transportation Facility:** Comfortable, safe and secure transportation facility from/to all over the valley.

## Professional Development Programs

- |   |   |
|---|---|
| ▶▶ Training on Web Development                            | ▶▶ Workshop on Entrepreneurship for Startups                          |
| ▶▶ Training on Public Speaking and Business Communication | ▶▶ Training on Personality Development & Leadership                   |
| ▶▶ Workshop on Proposal Writing                           | ▶▶ Panel Discussion on New Practices of HR & Marketing                |
| ▶▶ Workshop on Report Writing                             | ▶▶ Student Exchange Program with University of Calgary, Canada        |
| ▶▶ Career Talk with Aalaya                                | ▶▶ Workshop on Meeting Minute Writing                                 |
| ▶▶ HR Carnival  | ▶▶ Guest Lecture on "Community Development"                           |
| ▶▶ Training on Tally                                      | ▶▶ Guest Lecture on "Significance of Banking Career"                  |
| ▶▶ Training on Digital Marketing                          | ▶▶ Workshop on Interview Preparation and CV Writing                   |
| ▶▶ Training on Stress Management                          | ▶▶ Interaction Session on Share Market and Insurance                  |
| ▶▶ Guest Lecture on Article Writing                       | ▶▶ Student Fest (Synergy 2024: Igniting, Innovation and Unity)        |
| ▶▶ Workshop on Business Case Studies                      | ▶▶ Workshop on Seminar Paper Writing                                  |
| ▶▶ Subjectwise Power-point Presentation                   | ▶▶ Workshop on Research Report Writing (Qualitative and Quantitative) |
| ▶▶ Business Simulation Program                            | ▶▶ Experience Sharing Session by Industry Leaders                     |
| ▶▶ Workshop on Personal Branding                          |   |
| ▶▶ Workshop on Research Methodology                       |   |
| ▶▶ Training on Data Analysis Tools (SPSS, Jamovi)         |   |
| ▶▶ IBS Training from Norway                               |   |



# FACILITIES AND AMENITIES AT SWSC



## State-of-the-Art Classrooms

- Hi-Tech and IT-Based
- Well-furnished for Optimal Learning Environment
- Equipped with High Quality Projectors
- Individual Seats with Comfortable Furniture

## Well-Equipped Labs

- High-Speed Internet Access
- Computer Lab
- Management Lab
- BCA Kit Lab



## Resourceful Library

- Peaceful Study Environment
- Broad Collection of Textbooks
- Extensive Reference Books
- Variety of Journals
- Comfortable Seating for Co-study
- Independent Study Areas
- E-Library
- Friendly and Supportive Staff





## Dedicated Nursing Station

- Dedicated Infirmary
- Full-time Registered Nurse
- First-aid Treatments
- Blood Pressure Monitoring
- Immediate Medical Assistance
- Referral Networks to Grande International Hospital, Chirayu National Hospital, Kantipur General Hospital, etc.



## Refreshing and Hygienic Cafeteria

- AC Facility
- Warm Hospitality
- Central Kitchen
- Fast Food Kitchen
- Streamlined Workflow
- Bain-Marie Equipment
- Kiosk System
- Satellite Kitchen
- Bakery & Confectionary Services
- Buffet Meals
- Self-Service Options

## Spacious Modern Auditorium Hall

- Comfortable Venue
- Well-organized Layout
- Balcony for Additional Seating
- Suitable for Lectures, Seminars, and Events
- Accommodates up to 450 Attendees





# EXPLORING STUDENT POTENTIALITY AT SWSC

## An Interactive and Engaging Learning Experience



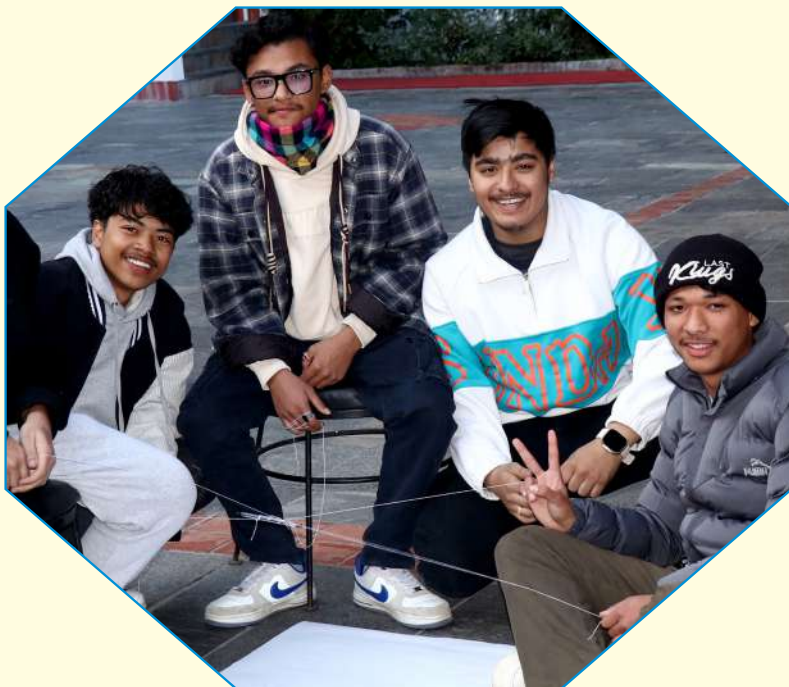
SWSC has adopted a dynamic and immersive learning environment designed to actively engage students in their academic journey. Our innovative educational methods transcend traditional lectures, fostering deeper comprehension, critical thinking, and a lifelong love of learning. Through diverse teaching methods, smart technology, and active participation, SWSC ensures a holistic educational experience for the overall development of students.

### Interactive Learning Environment

- Diverse teaching methods, including lectures, guest talks by industry professionals, virtual sessions, workshops, and seminars
- Technology-infused classrooms with cutting-edge multimedia tools and projectors
- Encouragement for class discussions, practical applications, and interactive sessions for active student participation







## Project-works and Presentations

- Field visits and research opportunities
- Social work activities and creative writing publications
- Subject-wise Power-point Presentations

## Workshops and Seminars

- Engagement with international experts through seminars, webinars, and workshops
- Entrepreneurial sessions and activities
- Research initiatives and academic excellence



## Experiential Learning Beyond the Classroom

- Quiz competitions, speech contests, essay writing competitions, debates, etc.
- Sports activities such as football, table tennis, and more
- Yoga and meditation sessions
- Social responsibility and community engagement



# FOSTERING RESEARCH CULTURE AT SWSC

## Research Management Cell (RMC)

Propelling a dynamic research culture, the Research Management Cell (RMC) at SWSC serves as a hub for faculty, staff, and students for their scholarly endeavors. The RMC provides comprehensive support, including guidance on research design, identification of funding opportunities, and navigating the publication process. To foster interdisciplinary collaboration and innovation, the RMC spearheads workshops, seminars, and collaborative projects. Further solidifying its commitment to scholarly dissemination, the RMC publishes the ***Southwestern Research Journal***, a peer-reviewed multidisciplinary open-access journal, annually.



## High-School Research Opportunities Program (HROP)

The High-School Research Opportunities Program (HROP) at SWSC is dedicated to fostering a culture of research among novice scholars. HROP encourages, guides, and motivates students, providing them with the necessary tools and support to explore and develop their research skills. Through this program, students gain hands-on experience in research methodologies, critical analysis, and academic writing, all under the mentorship of experienced faculty members and senior researchers. HROP aims to ignite curiosity and instill a passion for discovery, preparing students for future academic and professional pursuits in a research-intensive environment.

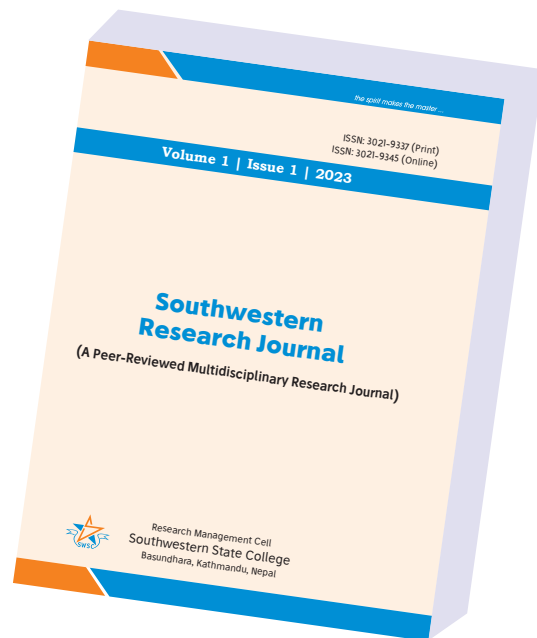




# OUR RESEARCH AND SCHOLARLY PUBLICATIONS

## Southwestern Research Journal (SRJ)

*Southwestern Research Journal (SRJ)* is an annual, blind peer-reviewed, multidisciplinary open-access journal published by the Research Management Cell (RMC) at SWSC, available both in print and online via Nepjol. It provides a scholarly platform for faculty, students, and external researchers to publish their research articles. Ensuring quality and authenticity, *SRJ* serves as a valuable resource in our college library, empowering students with the tools to enhance their knowledge and research skills.



## Southwestern Education Hub

The *Southwestern Education Hub* is a quarterly publication of SWSC offering platform for research-based articles in the areas of education, health, and the environment at the forefront. Alongside these scholarly contributions, the *Southwestern Education Hub* fosters a dynamic intellectual environment for publishing general articles on various themes, poems, songs, *ghazals*, essays, and short stories.

## Southwestern Newsletter

The *Southwestern Newsletter* is a monthly publication of SWSC offering a rich blend of news, perspectives, and insights into the world of education. Featuring articles from our talented students, it provides a glimpse into the vibrant academic life at SWSC, highlighting various activities and events within the college. This newsletter keeps the SWSC community informed and engaged, celebrating our collective achievements and ongoing academic endeavors.





# SWSC CLUBS: SHAPING TOMORROW'S LEADERS

## SWSC Management Club

The SWSC Management Club offers students a comprehensive platform to develop essential business skills and insights. With facilities for hosting case study competitions, workshops, and guest speaker events, the club provides opportunities for networking with industry professionals, refining business acumen, and gaining a deep understanding of contemporary management practices. Members are equipped with practical experiences and knowledge, preparing them to excel in the dynamic business landscape.



## SWSC Entrepreneurship Club

The SWSC Entrepreneurship Club cultivates an entrepreneurial spirit by providing students with hands-on learning experiences and mentorship from seasoned entrepreneurs. The club offers facilities for hosting workshops, business plan competitions, and networking events, enabling students to refine their business ideas and develop practical skills. Through these activities, students gain valuable insights into the startup ecosystem, learn essential entrepreneurial skills, and are empowered to launch and grow their own ventures.







## SWSC Art, Literature, and Culture Club

The SWSC Art, Literature, and Culture Club provides a vibrant platform for students to explore and celebrate artistic expression, literature, and cultural heritage. The club offers facilities for art exhibitions, literary readings, cultural festivals, and workshops, encouraging creativity and intellectual growth. Members have the opportunity to participate in various events that enhance their appreciation for the arts, foster creative writing, and promote cultural understanding, enriching their academic and personal lives.

## SWSC Social Work Circle

The SWSC Social Work Circle offers students a unique opportunity to engage in meaningful humanitarian activities and community service. The club provides facilities for organizing outreach programs, volunteer initiatives, and social awareness campaigns. Members can participate in workshops, seminars, and field visits, gaining practical experience in social work and contributing to the well-being of the community. This involvement fosters a sense of social responsibility, empathy, and leadership among students.







## SWSC IT Club

The SWSC IT Club provides a dynamic environment for students interested in information and communication technology, offering access to sophisticated computer labs and the latest software tools. The club hosts coding workshops, hackathons, tech talks, and project collaborations with industry professionals, enabling members to stay updated with technological advancements and develop practical skills for successful careers in the tech industry.

## SWSC Sports Club

The SWSC Sports Club offers students a wide range of athletic opportunities, promoting physical fitness and teamwork. The club provides access to well-maintained sports facilities, including courts and fields for various sports such as football, basketball, cricket, table tennis, and badminton. Members can participate in regular training sessions, inter-college tournaments, and sports events, fostering a spirit of competition and camaraderie. The club's activities not only enhance physical well-being but also cultivate leadership skills and a sense of sportsmanship among students.





# EXPANDING GLOBAL HORIZONS FOR GRADUATE EXCELLENCE

SWSC is committed to elevating graduate education, fostering collaborative research, nurturing entrepreneurial aspirations, and refining our teaching-learning methods. To achieve these goals and promote cross-cultural exchange, we have cultivated international partnerships with the following esteemed institutions and universities worldwide:

1. University of Central Missouri, USA
2. Liverpool John Moores Universities, UK
3. Fil. Dr. Jan-Urban-Sandal Institute, Norway
4. The American University in Cairo, Egypt
5. Gediz University, Izmir, Turkey
6. Apeejay Styra University, India
7. Mewar University, India
8. Dr. K. N. Modi University, India
9. Changchun University of Science and Technology, China
10. Institute for Studies and Development Worldwide (IFSD) Sidney, Australia
11. Infrastructure University of Kuala Lumpur, Malaysia
12. Incheon National University, Korea
13. SDK Co. Ltd, Korea
14. World Academy for the Future of Women, WAFW, USA





# STUDENT QUALITY CIRCLE (SQC)

The Student Quality Circle (SQC) at SWSC plays a pivotal role in upholding and enhancing the institution's commitment to academic excellence and overall quality. Comprised of dedicated and proactive students, the SQC collaborates closely with faculty and administration to identify areas for improvement and implement innovative solutions. This body is instrumental in fostering a culture of continuous improvement, ensuring that the college remains at the forefront of educational standards. Through regular feedback mechanisms and participation in decision-making processes, the SQC empowers students to take an active role in shaping their educational environment, thus promoting a sense of ownership and responsibility towards the institution's success.

## Student Quality Circle (SQC) at SWSC



**Sudipa Regmi**  
President



**Anish Karki**  
Vice-President



**Kritima Tiwari**  
Secretary



**Ashma Thapa**  
Joint-Secretary



**Rupina Adhikari**  
Treasurer

### Members



**Simran KC**



**Aayushma Shrestha**



**Sahadev Lamichhane**



**Shreya Adhikari**



**Sabina Thakuri**



**Pukar Mishra**



**Nirjal Ghimire**



**Aryan Adhikari**



**Prasanna Pudasaini**



**Shishir Dhakal**



**Biraj KC**



**Suyusha Thapaliya**



# BBM PROGRAM



The **Bachelor of Business Management (BBM)** at SWSC is a four-year (eight-semester) TU affiliated program designed to develop future business leaders, equipping graduates with practical knowledge, managerial skills, and self-confidence. The curriculum fosters analytical thinking, creative problem-solving, and effective decision-making skills. The program aims to enhance students' capabilities in various aspects of management, entrepreneurial and innovative skills, and ethical awareness, preparing them for the fast-changing global market.

After completing BBM, the graduates are ready to excel in various roles such as: Business Management Professional, Finance Manager, Business Researcher, Human Resources Manager, Marketing Manager, Production Manager, and Business Analyst.



## Why Choose BBM at SWSC?

- Well-experienced and highly qualified faculty
- Professional seminars and workshops with national and international experts
- Regular presentation classes to build communication skills
- State-of-the-art classrooms with audio-visual aids
- Dynamic and interactive learning environment along with sufficient ECAs and CCAs
- Field visits and internships with leading organizations
- Non-credit and short-term professional courses (project management, computer proficiency, stock market, insurance, banking)
- Resourceful library
- Job placement support
- Engagement in various clubs for the overall development

## Course Cycle

Semester I			Semester V		
15 Credit Hours			15 Credit Hours		
ECO 203	Microeconomics for Business	3	MKT 201	Fundamentals of Marketing	3
ENG 201	English - I	3	MGT 205	Operations Management	3
MGT 231	Foundation of Business Management	3	FIN 208	Financial Markets & Services	3
MTH 201	Business Mathematics - I	3	IT 231	IT and Application	3
SOC 203	Sociology for Business Management	3		Focus Area Course - I	3
Semester II			Semester VI		
15 Credit Hours			12 Credit Hours		
ACC 201	Financial Accounting	3	IT 232	Database Management System	3
ECO 204	Macroeconomics for Business	2	MGT 236	Business Environment	3
ECO 205	Seminar on Contemporary Issues of Macro Economics	1	MGT 237	Entrepreneurship and Business Resource Mapping	2
ENG 202	English - II	3	MGT 238	Practicum on Business Plan	1
MTH 202	Business Mathematics - II	3		Focus Area Course - II	3
MGT 232	Leadership and Organizational Behavior	2	Semester VII		
MGT 233	Seminar on Leadership and Organizational Behavior	1	15 Credit Hours		
Semester III				Elective Course - I	3
15 Credit Hours				Focus Area Course - III	3
ACC 202	Cost & Management Accounting	3		Focus Area Course - IV	3
ENG 203	Business Communication	3	IT 204	E-commerce	3
FIN 206	Fundamentals of Finance	3	MGT 239	Business Ethics and Corporate Governance	3
SOC 204	Nepalese History and Politics	3	Semester VIII		
STT 201	Business Statistics	3	18 Credit Hours		
Semester IV			MGT 240	Strategic Management	3
15 Credit Hours				Elective Course - II	3
MGT 234	Legal Environment for Business in Nepal	3		Elective Course - III	3
FIN 207	Financial Management	3		Focus Area Course - V	3
PSY 202	Psychology	3		Project Report Writing /	
ACC 204	Taxation and Auditing	3		Internship with Report	6
RCH 201	Business Research Methods	3			

## Eligibility

- +2 or equivalent in any discipline from any institution recognized by Tribhuvan University, and successful completion of CMAT conducted by Faculty of Management, TU.



# BCA PROGRAM

The **Bachelor in Computer Application (BCA)** at SWSC, affiliated to Tribhuvan University, is a four-year (eight-semester) program that aims to develop technical proficiency in computer applications and programming while fostering problem-solving and analytical skills. It equips students with comprehensive knowledge in networking, software development, and information systems, preparing them for professional roles in the IT industry and providing a solid base for further academic pursuits in computer science and related fields. The curriculum covers areas like networking, programming, software development, and information systems.

After completing BCA, the graduates are ready to excel in various roles such as Computer System Analyst, Software Programmer, Information System Manager, Database Administrator, Graphics Designer, Web Designer, and Network and Computer Systems Administrator.





## Why Choose BCA at SWSC?

- Well-experienced and highly qualified teaching faculty
- Well-equipped classrooms with audio-visual aids and comprehensive resources
- Sophisticated lab and resourceful library
- Regular practical assessments, subject-wise presentations, project works and research activities
- Emphasis on independent learning
- Periodic professional seminars and workshops with national and international experts
- Dynamic and interactive learning environment along with sufficient ECAs and CCAs
- Non-credit and short-term professional courses
- Support for internships and job placement
- Engagement in various clubs for the overall development

## Course Cycle

Semester I			16 Credit Hours	Semester V			15 Credit Hours
CACS101	Computer Fundamentals and Applications	4		CACS301	MIS and E-Business	3	
CASO102	Society and Technology	3		CACS302	Dot Net Technology	3	
CAEN103	English - I	3		CACS303	Computer Networking	3	
CAMT104	Mathematics - I	3		CAMG304	Introduction to Management	3	
CACS105	Digital Logic	3		CACS305	Computer Graphics and Animation	3	
Semester II			16 Credit Hours	Semester VI			17 Credit Hours
CACS151	C Programming	4		CACS351	Mobile Programming	3	
CAAC152	Financial Accounting	3		CACS352	Distributed System	3	
CAEN153	English - II	3		CACS353	Applied Economics	3	
CAMT154	Mathematics - II	3		CAMG354	Advanced Java Programming	3	
CACS155	Microprocessor and Computer Architecture	3		CACS355	Network Programming	3	
				CACS356	Project - II	2	
Semester III			15 Credit Hours	Semester VII			15 Credit Hours
CACS201	Data Structure and Algorithms	3		CACS401	Cyber Law & Professional Ethics	3	
CAST202	Probability and Statistics	3		CACS402	Cloud Computing	3	
CACS203	System Analysis and Design	3		CACS403	Internships	3	
CACS204	OOP in Java	3			Elective - I	3	
CACS205	Web Technology	3			Elective - II	3	
Semester IV			17 Credit Hours	Semester VIII			18 Credit Hours
CACS251	Operating System	3		CAOR451	Operations Research	3	
CACS252	Numerical Method	3		CAPJ452	Project - III	6	
CACS253	Software Engineering	3			Elective - III	3	
CACS254	Scripting Language	3			Elective - IV	3	
CACS255	Database Management System	3					
CAPJ256	Project-I	2					

## Eligibility

- +2 or equivalent in any discipline from any institution recognized by Tribhuvan University, and successful completion of Entrance Test conducted by Faculty of Humanities and Social Sciences, TU.



# BSW PROGRAM

The **BSW Program** at SWSC, is a **Bachelor of Arts (BA) Program** in Social Work (coupled either with Major English or Psychology) under the Faculty of Humanities and Social Sciences, Tribhuvan University, is a four-year program designed to equip students with the knowledge and skills needed for a professional career in social work. The curriculum covers human behavior, social welfare policies, and research methods. Students gain both theoretical insights and practical training to address critical situations, supporting diverse populations such as the elderly people, those with disabilities, and individuals with mental health issues. The program emphasizes core social work practices, preparing students to work effectively in various settings dedicated to serving the common good.

The BSW degree opens up a range of career opportunities in NGOs/INGOs, government agencies, research centers, human service organizations, child welfare agencies, and social welfare fields along with academic sectors, media, social entrepreneurship, counseling, and teaching.





## Why Choose BSW at SWSC?

- Experienced and highly qualified teaching faculty
- Well-equipped classrooms with audio-visual aids
- Holistic approach to social work education
- Field visits to NGOs/INGOs and other relevant sites
- Regular paper presentations, summary records, and case studies
- Individual and group conferences, neighborhood and rural camps
- Sufficient ECAs and CCAs
- Practical and theoretical knowledge in relevant subjects
- Support for internships, field visits, and job placements
- Collaborative research environment
- Seminars and workshops conducted by national and international experts
- Non-credit and short-term professional courses
- Engagement in various clubs for the overall development

## Course Cycle

### First Year

Full Marks 500

ENG 401	Compulsory English - I	100
SW 421	Introduction to Social Work	100
SW 422	Basic Sociology for Social Work	100
ENGL 421/ PSY 421	Reading Writing and Thinking/ Introduction to Psychology	100
ENGL 422/ PSY 422	History of English Literature and Criticism/ Social Psychology	100

### Third Year

Full Marks 500

ENG 403	Compulsory English - II	100
SW 425A	Community Organization	100
RDS410	Development Practices (Elective)	100
ENGL 425/ PSY 425	Visual Arts/ Psychosocial Counseling	100
SO410/ PSY 426	Federalism, Governance and Local Level Planning (Elective)/ Elective - General Psychology	100

### Second Year

Full Marks 500

NP 402	Compulsory Nepali	100
SW 423	Basic Psychology for Social Work	100
SW 424A	Social Case Work Practice	50
SW 424B	Social Work Practice with Groups	50
ENGL 423/ PSY 423	Prose: Essays and Short Stories/ Adolescence and Juvenile Delinquency	100
ENGL 424/ PSY 424	Reading and Responding to Poetry/ Abnormal Psychology	100

### Fourth Year

Full Marks 500

SW 426	Research Method and Academic Writing	100
SW 427	Indigenous Social Work Practice of Nepal	100
ENGL 426/ PSY 426	Drama and Novel/ Industrial and Organizational Psychology	100
ENGL 427/ PSY 427	Research and Writing/ Research Methods and Academic Writing	100
NPS 404	Nepal Adhyayan	100

## Eligibility

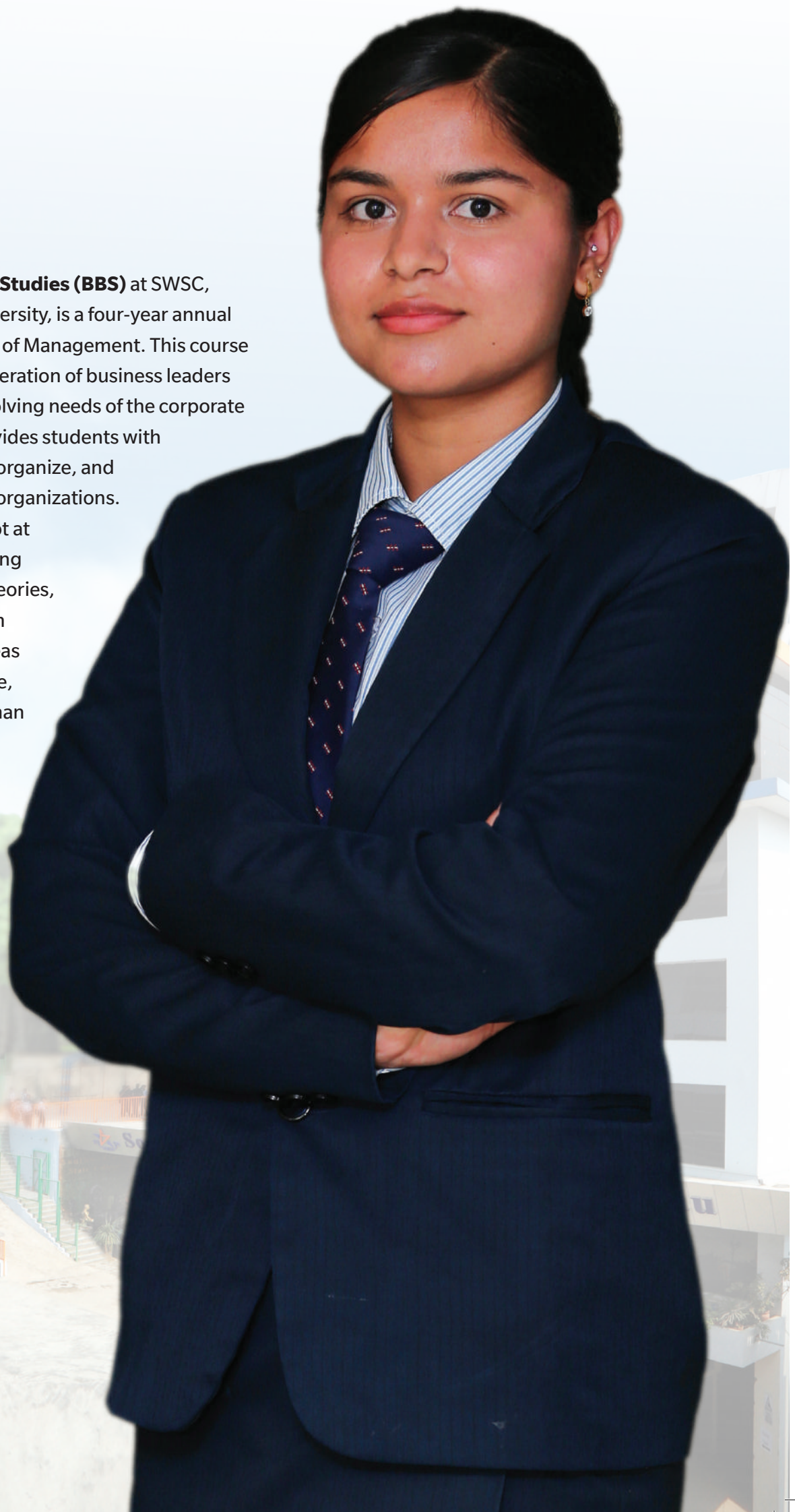
- +2 or equivalent in any discipline from any institution recognized by Tribhuvan University



# BBS

## PROGRAM

The **Bachelor of Business Studies (BBS)** at SWSC, affiliated to Tribhuvan University, is a four-year annual program under the Faculty of Management. This course aims to produce a new generation of business leaders capable of meeting the evolving needs of the corporate world. The curriculum provides students with practical skills to manage, organize, and supervise various types of organizations. BBS graduates will be adept at analyzing and understanding management concepts, theories, and practices. The program offers specializations in areas such as accounting, finance, management science, human resource management, and marketing. This comprehensive degree prepares graduates for careers in teaching, research, and consultancy.



## Why Choose BBS at SWSC?

- Experienced and highly qualified teaching faculty
- Well-equipped classrooms with audio-visual aids
- Focus on practical and research-oriented learning
- Subject-wise presentations and project works
- Non-credit and short-term professional courses (project management, time management, computer proficiency, career development, stock market, insurance, banking)
- Periodic seminars and workshops conducted by national and international experts
- Guest lectures from industry experts
- Field visits, internships, and job placement support
- Engagement in various clubs for the overall development
- Sufficient ECAs and CCAs

## Course Cycle

### First Year

Full Marks 500

MGT 201	Business English	100
MGT 202	Business Statistics	100
MGT 207	Micro Microeconomics for Business	100
MGT 211	Financial Accounting and Analysis	100
MGT 213	Principles of Management	100

### Second Year

Full Marks 500

MGT 205	Business Communication	100
MGT 206	Macroeconomics for Business	100
MGT 212	Cost and Management Accounting	100
MGT 215	Fundamentals of Financial Management	100
MGT 223	Organizational Behaviour and Human Resource Management	100

### Third Year

Full Marks 500

MGT 204	Business Law	100
MGT 226	Foundation of Financial Management	100
MGT 217	Business Environment and Strategy	100
MGT 224	Taxation in Nepal	100
MGT 214	Fundamentals of Marketing	100

### Fourth Year

Full Marks 500

MGT 225	Entrepreneurship Concentration - I	100
	Concentration - II	100
	Concentration - III	100
MGT 221	Business Research Methods	50
MGT 401	Final Project	50

## Eligibility

- Successful completion of +2 or equivalent in any discipline from any institution recognized by Tribhuvan University



# MBS

## PROGRAM

The **Master of Business Studies (MBS)** at SWSC, affiliated to Tribhuvan University, is a two-year (four-semester) program designed to cultivate competent managers for various organizational roles. This program provides in-depth knowledge of business and management issues, integrating analytical and functional areas through core business courses. Students can specialize in areas such as Accounting, General Management or Finance, enhancing their expertise. The MBS program aims to develop entrepreneurial capabilities both in national and international levels, improve research skills, and prepare students for advanced studies in management.



## Why Choose MBS at SWSC?

- Highly qualified and reputed teaching faculty
- Well-equipped classrooms with audio-visual aids and comprehensive resources
- Participatory teaching methods with subject-wise presentations, project works, field visits and excursions
- Periodic workshops, seminars and guest lectures by renowned experts
- Non-credit and short-term professional courses
- Extensive library with a wide range of resource materials
- Regular publication of journals and articles for research exposure
- Engagement in various clubs for the overall development
- Facilitation for internships and job placement

## Course Cycle

### First Semester

Credit Hours 15

MKT 511	Marketing Management	3
ECO 512	Managerial Economics	3
MSC 514	Statistical Methods	3
MGT 515	Organizational Behavior	3
MGT 519	Managerial Communication	3

### Second Semester

Credit Hours 15

FIN 510	Financial Management	3
MGT 513	Human Resource Management	3
MSC 516	Production and Operations Management	3
ACC 517	Management Accountancy	3
MGT 518	Business Environment	3

### Third Semester

Credit Hours 15

ACC 519	Accounting for Financial Managerial Decision and Control	3
MSC 521	Research Methodology	3
MGT 522	International Business	3
MGT 524	Entrepreneurship	3
	Specialization Course (Any one from Group A)	3

### Fourth Semester

Credit Hours 15

MGT 523	Strategic Management	3
	Specialization Course (Any Two from Group B)	3+3=6
MGT 525	Dissertation	6

## Specialization Courses

Finance (Specialization)	Marketing (Specialization)	Management (Specialization)	Accountancy (Specialization)
Group A (Any One)	Group A (Any One)	Group A (Any One)	Group A (Any One)
FIN 656 Financial Derivatives and Market	MKT 691 Advertising Promotion Management	MGT 687 Recent Trends in Management	ACC 685 Corporate Taxation
FIN 688 Corporate Finance	MKT 692 Rural Marketing	MGT 688 Organizational Theory	ACC 686 Cost Management
Group B (Any Two)	Group B (Any Two)	Group B (Any Two)	Group B (Any Two)
FIN 685 Financial Markets and Institutions	MKT 685 Consumer Behavior	MGT 685 Organizational Development and Change	ACC 687 Contemporary Auditing
FIN 686 International Financial Management	MKT 686 International Marketing	MGT 686 Quality Management	ACC 688 Accounting Theory and Financial Reporting
FIN 689 Investment Management	MKT 687 Brand Management	MGT 689 Performance Management	ACC 689 Management Control Systems
FIN 690 Insurance: Theory and Practice	MKT 688 Sales Management	MGT 690 Leadership and Communication	ACC 690 Balance Scorecard: A Tool for Performance Measurement
FIN 691 Commercial Bank Management: Theory and Practice	MKT 689 Retail Management	-	-
	MKT 690 Services Marketing	-	-

## Eligibility

- Bachelor Degree in any discipline from any university recognized by Tribhuvan University, and successful completion of CMAT conducted by Faculty of Management, TU.



# MA PROGRAM IN ENGLISH

The **Master of Arts (MA) in English** at SWSC, affiliated to Tribhuvan University, is a two-year (four-semester) program that blends humanistic value of education with critical thinking across diverse fields of knowledge. This program is designed to enhance the creative, critical, and communicative skills in the students through a comprehensive exploration of language, literature, culture, and rhetoric. After the completion of the course, the graduates will be well-prepared for both academic and professional pursuits, capable of interpreting, analyzing, and synthesizing complex ideas.

## Why Choose MA in English at SWSC?

- Experienced, highly qualified, and reputed teaching faculty
- Well-equipped classrooms with audio-visual aids and comprehensive resources
- Participatory teaching methods
- Subject-wise presentations, term-papers and project works
- Extensive library with a wide range of resources
- Regular publication of journals and articles with collaborative research environment
- Workshops and training in communication, research, and creative writing
- Engagement in various clubs for the overall development
- Facilitation for internships and job placement

## Course Cycle

### First Semester

Credit Hours 15

(Required Courses)		
ENGL 551	Introduction to Literature and Literary Analysis	3
ENGL 552	Academic Writing - I	3
ENGL 553	Literary Criticism	3
ENGL 554	Ideas and Themes in Poetry	3
ENGL 555	Themes and Trends in Fiction	3

### Second Semester

Credit Hours 15

(Required Courses)		
ENGL 556	History of British and American Literature	3
ENGL 557	Critical Stylistics	3
ENGL 558	Modern and Contemporary Literary Theory	3
Elective (Any Two)		
ENGL559	Postcolonial Studies	3
ENGL 560	Travel Writing	3
ENGL 561	Non-fiction (from the Margin)	3
ENGL 562	Literature of War, Conflict and Trauma	3
ENGL 563	Media Studies	3
ENGL 564	Environmental Literature and Criticism	3
ENGL 565	Children's Literature	3

### Third Semester

Credit Hours 15

(Required Courses)		
ENGL 566	British and American Drama	3
ENGL 567	Ideas and Themes in Contemporary Poetry	3
ENGL 568	Academic Writing - II	3
Elective (Any Two)		
ENGL 569	Nepal Studies	3
ENGL 570	South Asian Studies	3
ENGL 571	19th Century Studies	3
ENGL 572	Modernist Studies	3
ENGL 573	Gender and Masculinity Studies	3
ENGL 574	Life Writing and Autobiography	3
ENGL 575	Literature and History	3
ENGL 576	Translation Studies	3

### Fourth Semester

Credit Hours 15

(Required Courses)		
ENGL 577	Experimental Fiction	3
ENGL 578	Cultural Studies	3
ENGL 579	Language and Communication	3
Elective (Any Two)		
ENGL 580	Postmodernist Studies	3
ENGL 581	Performance and Theatre Studies	3
ENGL 582	Single Author	3
ENGL 583	Economics and Literature	3
ENGL 584	Interpersonal Communications	3
ENGL 585	English Language Teaching (ELT)	3
ENGL 586	Thesis Writing	3

## Eligibility

- Bachelor Degree in any discipline from any institution recognized by Tribhuvan University, and successful completion of Entrance Test conducted by Faculty of Humanities and Social Sciences, TU.

# What Our Alumni Say about Us

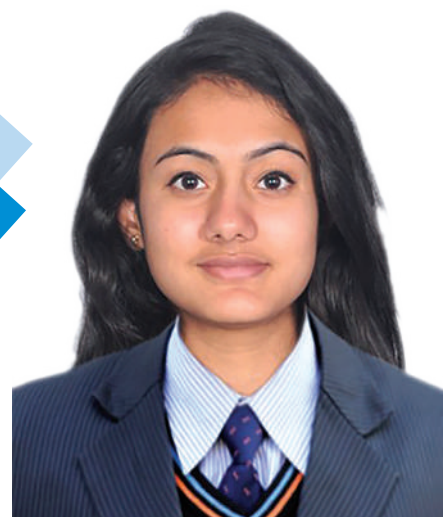


**Sabika Shrestha**

News Reader  
AP1 Television

"My journey at Southwestern State College was transformative and empowering, paving the way for my career in media as a News Reader at AP1 Television. The rigorous academic activities, along with hands-on training and practical experiences, honed my skills and prepared me for the challenges of the media industry. The unwavering support and guidance from the faculties and the college's focus on communication skills and critical thinking were invaluable. SWSC's state-of-the-art facilities and a nurturing environment provided the perfect backdrop for my growth. The college's commitment to excellence and its vibrant community fostered my passion for journalism, helping me achieve my dreams. I am proud to be an alumna of SWSC and grateful for the foundation it provided me to excel in my career."

"Southwestern State College played a crucial role in my academic journey, helping me achieve a remarkable milestone in Social Work with a score of 92 out of 100 - a record that still stands unbroken at Tribhuvan University. The supportive and inspiring environment at SWSC, coupled with the dedicated guidance from my professors and staff at the college, was instrumental in my success. The programs like field works, rural camps, community service, old-age home visit, etc. are still fresh and inspiring me in the field of social work. SWSC's emphasis on practical learning and research-oriented education empowered me to explore further into my field, laying a strong foundation for my future endeavors. I am immensely grateful for the opportunities and support I received at SWSC, which were pivotal in achieving this significant academic accomplishment."



**Barsha Pandey**

Top Scorer in Social Work (92/100)  
Tribhuvan University



**Sudip Lamichhane**

Entrepreneur

"Attending SWSC was a wonderful experience that shaped my career and personal growth. The college provided me with unparalleled support and guidance, fostering an environment where my entrepreneurial spirit could thrive. The faculty's dedication to nurturing creative thinking and practical skills was instrumental in helping me navigate the complexities of the business world. The college provided me valuable networking opportunities, and hands-on projects for developing my confidence and expertise necessary to launch my own successful venture. The mentorship and resources available at SWSC were pivotal in my journey, and I am grateful for the role the college played in my achievements today."





**Nabin Chapagain**  
Branch Manager,  
Rastriya Banijya Bank, Dhankuta

*"My time at Southwestern State College (SWSC) was instrumental in shaping my career trajectory, leading to my current role as a Branch Manager at Rastriya Banijya Bank in Dhankuta. The comprehensive and dynamic curriculum at SWSC equipped me with the critical skills and knowledge required in the banking sector. The mentorship and unwavering support from the faculty played an instrumental role in my professional development. The college's emphasis on practical learning, along with its excellent resources and facilities, provided me with a solid foundation in financial management and leadership. SWSC's commitment to fostering analytical thinking and problem-solving skills has been pivotal in my success. I am deeply grateful to SWSC for its role in my personal and professional growth."*

*"SWSC's BCA program equipped me with a comprehensive understanding of software development. The program emphasized on project works, workshops, seminars and talk shows by industry experts which nurtured my technical skills and fostered my passion for web development enabling me to master complex technologies like Laravel and React. The emphasis on practical skills at SWSC prepared me to excel in the fast-paced world of software development. I am profoundly grateful for the opportunities and support I received during my time there. Now, I contribute to innovative solutions as a Fullstack Developer at Retailcare."*



**Pabitra Soti**  
Fullstack Developer  
(Laravel, React Developer), Retailcare



**Sandarbha Silwal**  
School Principal  
Nawaranta Secondary School

*"SWSC played a pivotal role in shaping my career in educational leadership. The comprehensive and dynamic programs offered at SWSC equipped me with the essential skills and knowledge required to excel as a school principal. The college's focus on innovative teaching methods, leadership training, and a collaborative learning environment helped me develop strong educational leadership skills. The mentorship and support from the inspiring faculty were instrumental in my growth, fostering a deep understanding of effective school management and administration. My experiences at SWSC have been invaluable, and I am immensely grateful for the opportunities that have paved the way for my success as the Principal of Nawaranta Secondary School today."*



# PHOTO GALLERY







# PHOTO GALLERY



# PHOTO GALLERY



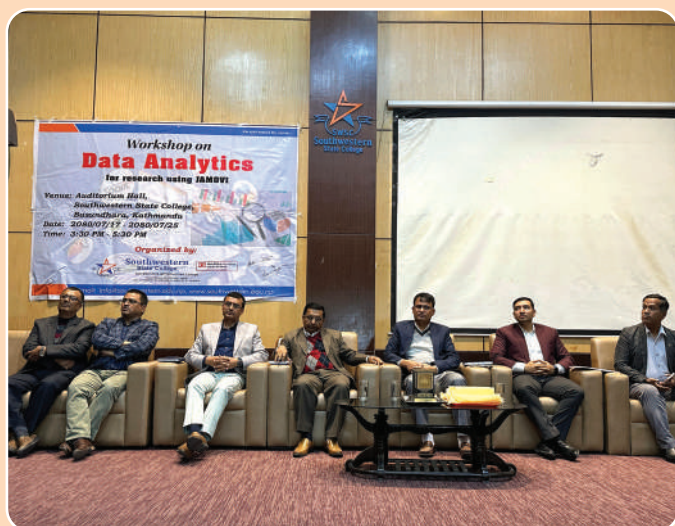




# PHOTO GALLERY



# PHOTO GALLERY







# PHOTO GALLERY



# Southwestern Group



## Southwestern State College

Basundhara, Kathmandu  
Tel: 01-4955457, 4955458, 4986107, 4989676  
www.southwestern.edu.np  
E-mail: info@southwestern.edu.np

BBM | BCA | BBS | BSW | MBS | MA (English)



## Southwestern School

Basundhara, Kathmandu  
Tel: 01-4956065, 4961914, 4960080  
www.southwesternschool.edu.np  
E-mail: info@southwesternschool.edu.np



## Southwestern State Secondary School

Basundhara, Kathmandu  
Tel: 01-4955457, 4955458, 4986107, 4989676  
www.southwestern.edu.np  
E-mail: info@southwestern.edu.np

Science | Management | Law | Humanities



## Southwestern Centre for Research and PhD Studies

Basundhara, Kathmandu, Nepal  
P.O.Box: 20771, Tel: +977-01-5147340  
www.phdcentre.edu.np  
E-mail: info@phdcentre.edu.np, phdcentre@yahoo.com



## Southwestern Business College

(Affiliated to PU)  
Basundhara, Kathmandu  
Tel: +977-01-4981005  
www.swbusinesscollege.edu.np  
info@swbusinesscollege.edu.np

BBA | BHM | MBA



## Southwestern Academic Research Centre

Basundhara, Kathmandu  
Tel: 01-4955457, 4955458, 4986107, 4989676  
www.southwesternresearch.com.np  
E-mail: info@southwesternresearch.com.np



# Executive Board



**Er. Basudev Bista**  
Chairperson



**Dhani Ram Oli**  
Member



**Him Prasad Pathak**  
Member



**Dr. Jayhari Raj Pandey**  
Member



**Bijay Malla**  
Member

## Management Team



**Dr. Rajendra KC**  
Campus Chief



**Hari Singh K.C.**  
Asst. Campus Chief



**Ganesh Mahara**  
Program Director



**Rajendra Prasad Lamichhane**  
Program Coordinator



**Sarita Shakya Pradhan**  
International Relations Coordinator

## Academic Heads



**Ravi Chapagain**  
Bachelor & Master



**Raju Dhakal**  
Science



**Himlal Pokharel**  
Management & Humanities



the spirit makes the master...



# Southwestern State College

Basundhara, Kathmandu



P.O.Box: 8975 EPC 5343  
Basundhara, Kathmandu, Nepal  
Tel: 01-4955457, 4955458, 4986107, 4989676  
E-mail: [info@southwestern.edu.np](mailto:info@southwestern.edu.np)  
[www.swsc.edu.np](http://www.swsc.edu.np)  
[www.southwestern.edu.np](http://www.southwestern.edu.np)

